

Documentation

Logging – Checking – Approval – Archiving

MELAflash · MELAnet Box · MELAtrace® · MELAdoc · MELAprint
MELAcontrol® · MELAG network adapter · MELAG seal check



Routine and batch control



MELAcontrol®

The test system defined in the standard DIN EN ISO 11140-1 „Sterilization of health care products – Chemical indicators – General requirements“ and in the standard EN 867-5 „Non-biological systems for use in sterilizers“ simulates the most demanding requirements placed on the sterilization of hollow body instruments.

MELAcontrol® has been developed as a short-term test body and is disposed of after 250 cycles. It is small and extremely cheap. MELAcontrol® PRO on the other hand is a long-term test body designed for intensive use. The test body can be used further, only the indicator strips must be replaced.



MELAG seal check

The regulatory authorities interpret the validated procedure for the treatment of instruments specified by the medical products operators' ordinance as requiring routine controls for film sealing devices. The "seal check" can be used in the routine checks to verify the quality of the seal seam. The contrast of the special print pattern on the seal check can be used to check the homogeneity of the seal seam and the quality of the film adhesion to the paper.

Log storage



MELAflash

The MELAflash system enables easy and convenient documentation of the MELAG steam sterilizers from the Pro-Class, S-Class, the Kliniklav® 25, MELAquick 12+ and MELAtronic® EN as well as the MELAseal® Pro sealing device. The system comprises the CF card printer, CF card and the card reader. Logs can be saved on a CF card quickly and easily without the need for an external printer or connection to the practice network.

After the data has been transferred to the practice PC via the MELAflash card reader, you can view the logs very easily using the MELAtrace® documentation software. Alternatively, it can be printed on a printer connected to your PC.

Log transfer



MELAnet Box

The MELAnet Box permits the simple network connection of MELAG steam sterilizers of the Pro-Class, S-Class, Kliniklav® 25, MELAquick 12+ and MELAtronic® EN via Ethernet. Connected to the serial interface of the steam sterilizer, they receive all process data, converting it into network compatible form and forwarding it in the internal practice network.

The sterilization log is outputted automatically after a program has been ended. The logs can be opened, viewed and printed via key operation and without any additional software.

Log printout



MELAprint 44

MELAprint 44 enables easy and convenient log output of the MELAG steam sterilizers from the Pro-Class, S-Class, the Cliniclav® 25, MELAquick 12+ and MELAtronic® EN. The log printout makes information available pertaining to the selected program, the date, time, current batch number, the actual values for vacuum, pressure and temperature, confirmation of the successfully-completed program and impermissible deviations (if occurred) for archiving purposes. Direct connection to the steam sterilizer makes for easy printing of the logs independently of the practice network.



MELAG network adapter

The MELAG network adapter permits simple connection of the MELAprint 42/44 log printer to the Premium-Plus and Cliniclave® steam sterilizers and the MELAG MELAtherm® 10 Washer-Disinfector via a network connection (Ethernet). The MELAprint 42/44 can also be integrated in the practice network.

The MELAG network adapter is connected to the serial interface of the MELAprint 42/44 and can be reached via a network cable (Ethernet) via the steam sterilizer and the MELAtherm® 10; this permits log printout via the printer.

Label printing



MELAprint 60


























The MELAprint 60 label printer can be connected directly to MELAG steam sterilizers of the Premium-Plus-Class or the Cliniclave® series. The labels for marking sterilized medical products can be printed directly after batch approval on the steam sterilizer screen: completely self-sufficiently, and entirely network-independent. Alternatively, when using the documentation software MELAtrace®, the MELAprint 60 can be integrated in the network and used for all connected MELAG steam sterilizers and the MELAtherm®. The labels specify all the necessary information pertaining to storage time, batch number, sterilization date, the person issuing approval and a barcode containing the clear PDF designation of the decontamination report. Regardless of whether the steam sterilizer or MELAtherm® is connected with the network, the barcode can be read in to the patient management system with conventional scanners. Labels can also be stuck to paper patient files. This makes it very easy to trace an instrument to a sterilization cycle and a patient to a sterilization batch.



MELAdoc

The MELAdoc label printer facilitates and simplifies batch documentation and permits manual batch traceability. The approved wrapped instrument is labelled after sterilization by application of the label. MELAdoc labels are self-adhesive on both sides. After using the instruments, the label can be removed from the package quickly and easily and entered in the patient records. In this way, it is easy to assign the sterilized instruments and patients with a sterilization date, charge number, the person issuing approval, the sterilizer used and a best-before date.

Overview of system and compatibility

	MELAtherm® 10	Premium-Plus-Class	Pro-Class	S-Class MELAquick 12+	Cliniklav® 25	Cliniclave® 45	MELAtronic® EN	MELAseal® Pro	MELAseal® 200	MELAseal® 100+
										
Routine and batch control										
 MELAcontrol® art.-no.: 01080		x	x		x	x				
 MELAcontrol® PRO art.-no.: 01075		x			x	x				
 MELAG seal check art.-no.: 01079								x	x	x
Log storage										
 MELAflash CF card printer art.-no.: 01039	Function integrated	Function integrated	x	x	x	Function integrated	x	x		
 MELAflash card reader art.-no.: 01048	x	x	x	x	x	x	x	x		
 MELAflash CF card art.-no.: 01043	x	x	x ¹	x ¹	x ¹	x	x ¹	x ¹		
 USB flash drive art.-no.: 19901									x	
Log transfer										
 MELAnet Box art.-no.: 40296	Function integrated	Function integrated	x	x	x	Function integrated	x			
 USB/series adapter art.-no.: 80270			x	x	x		x	x		
Log printout										
 MELAprint® 44 art.-no.: 01144	x ²	x ²	x	x	x	x ²	x	x		
 MELAG network adapter art.-no.: 40295	x	x				x				
Label printing										
 MELAprint 60 art.-no.: 01160		x				x				
 MELAdoc art.-no.: 01095		x	x	x	x	x	MELAtronic® 15 EN+			
Documentation, loading and approval										
 MELAtrace® art.-no.: 21138										
 MELAprint 60³ art.-no.: 01160	x	x	x	x	x	x	x	x	x	
Bar code hand scanner ^{3,4} art.-no.: 01110	x	x	x	x	x	x	x			

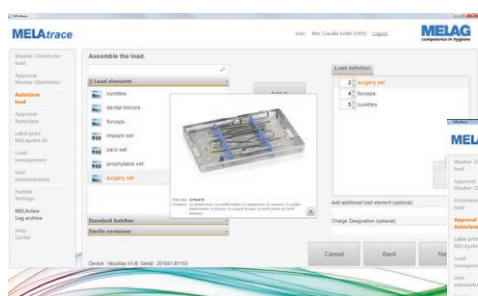
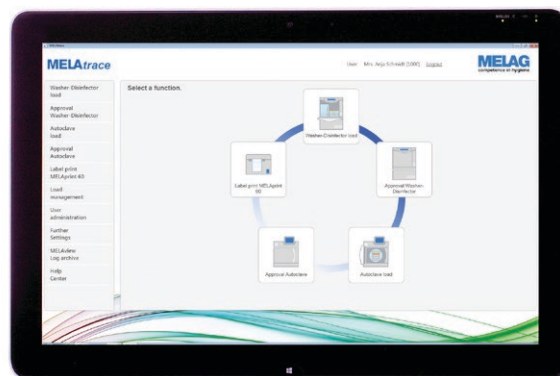
1 Only in connection with MELAflash CF card printer, 2 Only in connection with MELAG network adapter, 3 In connection with MELAtrace® and a computer with RJ45/Ethernet interface, 4 For load management in MELAtrace®

The list shows the range of steam sterilizer, washer-disinfector and sealing device models available from MELAG. Older MELAG steam sterilizer models also support the MELAG documentation media outlined in this brochure. For further information, contact a specialist stockist.

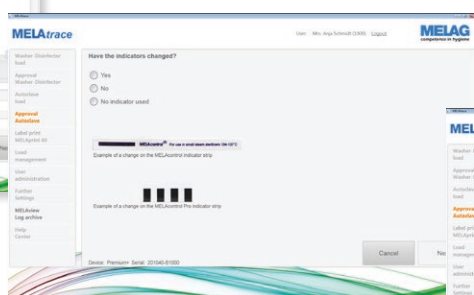
MELAtrace®

Documentation, load management, approval and traceability

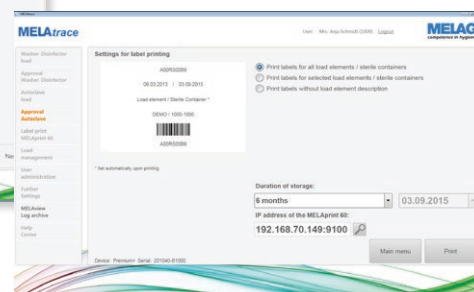
MELAG has developed MELAtrace® an intuitively-operated software for documentation, load management and batch approval – this performs documentation quickly, simply, safely and without paperwork.



Steam sterilizer load



Approval steam sterilizer



Label printing

What does MELAtrace® offer?

MELAtrace® combines the decontamination steps cleaning and disinfection with sterilization in order to ensure comprehensive and complete documentation of the instrument treatment. The intuitive user interface and the simple license model guarantee the highest levels of safety and satisfaction.

Clearance of the MELAtherm® batch requires only a few clicks. The approved MELAtherm® log can be used to determine the steam sterilizer load, in order to combine the decontamination steps cleaning, disinfection and sterilization. Following the sterilization process, batch clearance requires only a few mouse-clicks. All process steps, program logs and instrument decontamination decisions are fully documented and archived securely. A log of the entire instrument decontamination process is issued as a tamper-proof PDF.

Barcode labels can then be printed on the MELAprint 60 to facilitate traceability of the individual load elements. This can be read-in via a scanner and added to the patient administration system.

The licence model of the MELAtrace® is also unique: purchase of a single license permits the permanent connection of your MELAG devices. This is a one-off payment; there are no annual fees.

The MELAtrace® user interface is designed for Windows 8 and above (with touch-function) and lower windows operating systems (mouse-click operation). A range of user settings makes MELAtrace® individually-configurable for the needs of every practice.

Documented safety

For your patients, your personnel and your practice!

Instrument decontamination ends with the documented approval for renewed use or storage. Clearance must be performed and documented by authorized expert personnel.

The approval procedure involves the performance and documentation of routine checks; the inspection and documentation of complete and correct process; the inspection of packaging for its undamaged nature and dryness and the inspection of the labelling of the sterilized equipment.

Instruments used in medical and dental practices or other ambulant institutions, especially instruments that come into contact with blood or wounds must be used in a "sterile" state. Responsibility for ensuring sterility lies with the person clearing the decontamination after treatment as being "sterile".

System solution, innovation, quality and expertise:

We are the best partner for your needs

As a German owner-run and operated family concern founded in 1951, we have a long history of successful specialization in hygiene products for **clinic and practice-based use**. We are the only large-scale provider in this area to concentrate exclusively on our core area of expertise.

MELAG is the only manufacturer to provide **complete system solutions for instrument decontamination**. We regard this workflow as an integrated solution, thereby increasing efficiency, avoiding errors and saving time.

Our focus on **quality, innovation and the highest of safety standards** has established MELAG as the world's leading manufacturer in the "instrument decontamination" field, selling over 550,000 devices to date.

We aim to provide **modern products and the best possible solutions**. To this end, we work together closely with medical practices and leading hygiene specialists to subject our products to continual improvement. With over 160 R&D, IT and testing engineers, we strive daily to improve energy-efficiency, whilst shortening program times and improving operation.

Our entire product range is **produced exclusively in Germany** on a c. 20,000 m² premises in Berlin. This ensures the highest quality and best technical support.

Our customers are justified in demanding the highest-possible quality and reliability from MELAG. You can trust in world-beating quality produced as a result of our *"competence in hygiene"* which produces *"Quality – made in Germany"*.

The MELAG management and team.



Come on a
virtual tour of
our company!

