

# Tetric Evo-Line

The composite



**One solution**  
for all cavities

Efficient  
Esthetics

**ivoclar**  
**vivadent**  
passion vision innovation

# One solution for all cavities

---

The Tetric Evo-Line of products consists of four well-coordinated composite resins for your direct restorative needs.

**Tetric EvoCeram®** is a sculptable universal composite and **Tetric EvoFlow®** is a flowable universal composite for anterior and posterior restorations.

**Tetric EvoCeram® Bulk Fill** is a sculptable composite and **Tetric EvoFlow® Bulk Fill** a flowable composite for 4-mm bulk placement in the posterior region.

## Advantages that convince users

- chameleon effect that ensures a natural shade blend
- true-to-nature esthetics for posterior restorations
- time savings of up to 47%<sup>1</sup>
- one kit with only 6 materials for all cavities



More than

# 200

million restorations placed worldwide<sup>2</sup>

---

# 95%

survival rate<sup>3</sup>



<sup>1</sup> Tetric EvoCeram Bulk Fill and Tetric EvoFlow Bulk Fill compared to Tetric EvoCeram and Tetric EvoFlow; data available upon request.

<sup>2</sup> Based on sales figures

<sup>3</sup> A total of 890 fillings were monitored worldwide in seven clinical studies over observation periods ranging from 5 to 10 years. The overall survival rate calculated for Tetric EvoCeram<sup>®</sup> was 95.1 per cent.

# Chameleon effect ensures a natural shade blend

The lifelike reconstruction of lost tooth structure requires a material that features light optical properties which come very close to those of natural enamel and dentin.

## The shade concept:

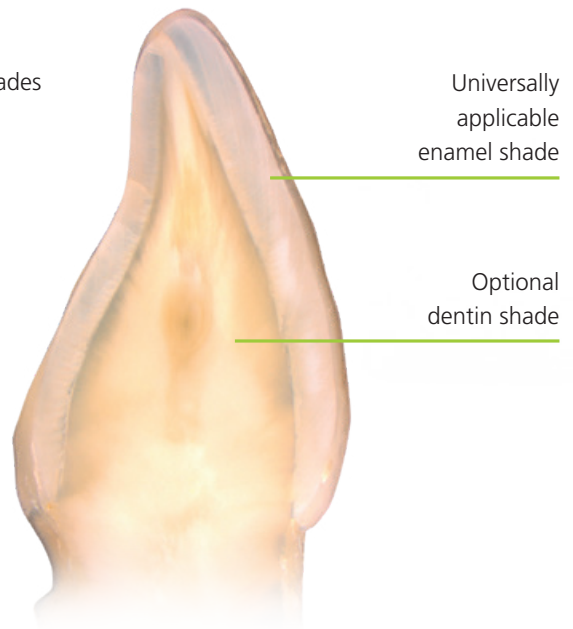
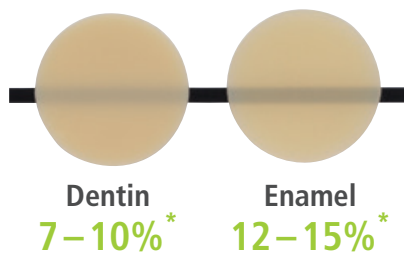
### One universal enamel shade for small defects

When working with the composites of the Tetric Evo-Line, one universal shade is sufficient to achieve a lifelike, esthetic result in most clinical scenarios.

### Additional dentin shades for large defects

Both Tetric EvoCeram and Tetric EvoFlow offer various dentin shades with a low translucency to restore large defects or cavities with heavily stained dentin surfaces.

### Translucency levels of the Tetric EvoCeram® shades



\* Example values

## Anterior restorations made of Tetric EvoFlow® A2 Dentin and A1

Source: Dr Ronny Watzke, Ivoclar Vivadent, Liechtenstein



Starting situation: Diastema and defective fillings in teeth 12, 13, 22 and 23



Final situation:



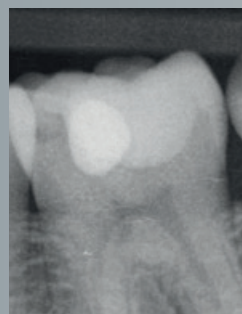
#### Exceptional chameleon effect

The special monomer and filler mixture is responsible for the exceptional chameleon effect. This effect ensures a natural shade blend with the surrounding dentition.

The refractive index of the monomer matrix matches that of the fillers - in this case, of the glass rod. It appears nearly invisible.

## Posterior restoration made of Tetric EvoFlow® A2 Dentin and Tetric EvoCeram® A2

Source: Dr Stephanie Huth, Ivoclar Vivadent, Liechtenstein, 2016



Starting situation: Proximal caries on the distal aspect of tooth 36 with occlusal restoration that is still intact

Final result

# True-to-nature esthetics for posterior restorations

Tetric EvoCeram® Bulk Fill and Tetric EvoFlow® Bulk Fill allow the same excellent esthetic results to be achieved in the posterior region as conventional composites. This has been confirmed by a multi-centre study conducted by Miletic, PhD, MSc, Prof. Dr Hickel, Prof. Dr Van Meerbeek and Prof. Dr Tarle.<sup>1</sup>



The development of the esthetic Tetric EvoCeram Bulk Fill and Tetric EvoFlow Bulk Fill materials would not have been possible without the highly reactive and patented **Ivocerin**® light initiator.

Conventional bulk-fill composites are often very translucent. Ensuring a reliable depth of cure, composite resins incorporating Ivocerin can be placed in increments of up to 4 mm and achieve an enamel or dentin-like translucency.

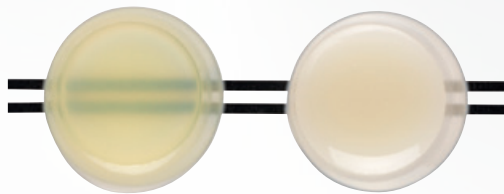


<sup>1</sup> Vesna Miletic, Reinhard Hickel, Bart Van Meerbeek, Zrinka Tarle (2018); Bulk- versus layer-filled Class-II restorations: 1-year CED-IADR, PBRN clinical study, CED-IADR

The **Aessencio® technology** represents a significant milestone in the esthetic optimization of bulk-fill composites. During the polymerization process, the translucency level of Tetric EvoFlow Bulk Fill changes to a dentin-like translucency of less than 10 percent. This allows stained dentin to be effectively concealed.



The in-vitro test demonstrates the effect of the Aessencio technology: The black lines under the Tetric EvoFlow Bulk Fill sample are clearly visible before light-curing. After curing, they are completely masked due to the change in translucency:



Tetric EvoFlow Bulk Fill before and after polymerization

#### **Well-matched materials:**

The different consistencies and shades are uniquely formulated to be used in any combination. Very lifelike restorations are possible, for example, when Tetric EvoFlow Bulk Fill and Tetric EvoCeram are combined.



# Time-tested quality and durability

The Tetric Evo-Line combines proven features and state-of-the-art technology. Tetric EvoCeram<sup>®</sup> was the first product of the range. It has been successfully used in clinical practice for more than 10 years.

“ I have used Tetric EvoCeram ever since it was launched. It is very reassuring to see that the quality of the restorations continues to be outstanding, even after a number of years. My experiences have been excellent not only with Tetric EvoCeram, but also with its predecessor, Tetric Ceram. Therefore, I expect similar performance of the further developed Tetric EvoCeram<sup>®</sup> Bulk Fill. ”

**Dr Eduardo Mahn**

Director, Clinical Research and Esthetic Dentistry Program,  
Universidad de los Andes, Santiago, Chile



**Learn more about the topic of durability:**

[www.ivoclarvivadent.com/telstudies-en](http://www.ivoclarvivadent.com/telstudies-en)

More than

**200** million restorations placed worldwide<sup>1</sup>

**95%** survival rate<sup>2</sup>

<sup>1</sup> Based on sales figures  
<sup>2</sup> A total of 890 fillings were monitored worldwide in seven clinical studies with observation periods ranging from 5 to 10 years. The overall survival rate calculated for Tetric EvoCeram<sup>®</sup> was 95.1 per cent.





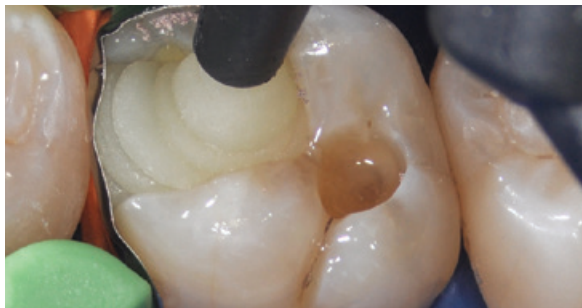
# Bulk-filling materials offer enhanced process reliability

Due to their efficient application protocol, bulk-fill materials are less technique sensitive than conventional composite resins.

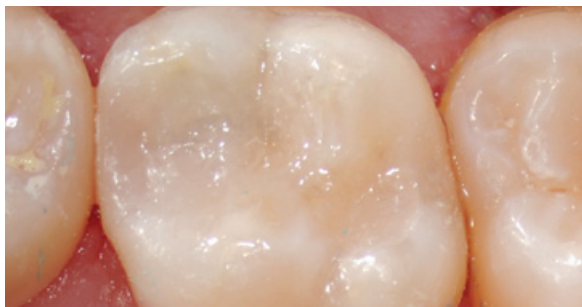
The reason: Fewer layers need to be applied as increased layer thicknesses of up to 4 mm<sup>1</sup> are possible. This makes application of the composite less error prone and increases the ability to achieve successful long-term results.



Starting situation



One 4-mm increment of Tetric EvoCeram Bulk Fill is applied.



Final situation

Source: Marcos Vargas (DDS, MS), University of Iowa, USA

## Further benefits

- less process-related air entrapment
- reduced risk of post-operative sensitivity<sup>2</sup>



<sup>1</sup> The maximum layer thicknesses recommended for our bulk-fill materials have been increased from 2 mm to up to 4 mm.  
<sup>2</sup> Postoperative sensitivity may be caused, inter alia, by fillings that are not completely cured. This risk is reduced in bulk-fill materials as their depth of cure is considerably higher than that of conventional composites.

# Excellent handling properties to suit every situation

---

Composite resins must be designed to provide optimum handling, independent of the cavity class, clinical situation or personal preferences of the user.



## Sculptable handling and reduced stickiness

---

The reduced stickiness of **Tetric EvoCeram** and **Tetric EvoCeram Bulk Fill** facilitates the creation of anatomical tooth structures. Modelling instruments such as OptraSculpt® are ideal for this purpose.



## Flowable when desired

---

While **Tetric EvoFlow** is flowable under pressure, it remains in place when no pressure is exerted. Due to its thixotropic properties, Tetric EvoFlow can be applied exactly where it is needed, making it suitable for use as a liner as well as a desired choice for small defects or anterior restorations.



## Self-levelling consistency

---

**Tetric EvoFlow Bulk Fill** ensures excellent adaptation to cavity walls. It is ideally suited to fill large cavities in the posterior region.



- **high radiopacity**  
of up to 400 % Al
- **low shrinkage stress**  
of e.g. 1.96 % in the case of Tetric EvoCeram Bulk Fill
- **long working time**  
of more than 3 minutes\*
- **short curing intervals,**  
e.g. from 5 seconds with the Bluephase Style 20i  
for all shades

\* according to ISO 4049

# One kit with only 6 materials for all cavities

---

The size of dental defects in anterior and posterior teeth can vary considerably. Therefore, dentists require materials in different consistencies, shades, layer thicknesses and degrees of translucency to adequately restore all types of damaged teeth.

Ivoclar Vivadent offers a System Kit with 6 different composite resins that are intuitive to use. With this small range of materials, all types of cavities can be filled:

**Tetric EvoCeram<sup>®</sup> A2, A2 Dentin and A3, Tetric EvoFlow<sup>®</sup> A3** as well as **Tetric EvoCeram<sup>®</sup> Bulk Fill<sup>™</sup> IVA** and **Tetric EvoFlow<sup>®</sup> Bulk Fill<sup>™</sup> IVA**.

The System Kits have been designed to fit the drawer of any dental unit.



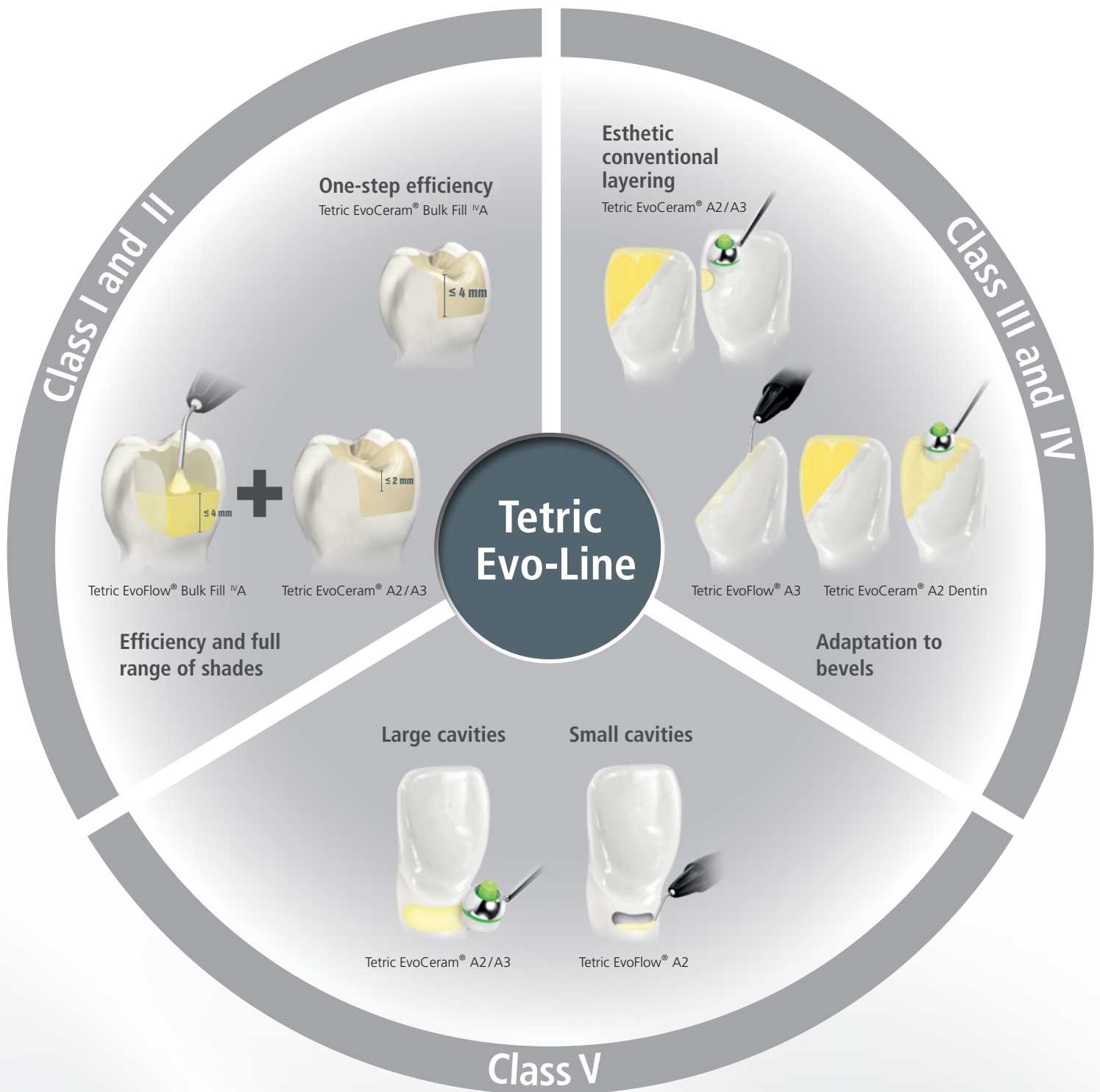
Example of a  
Tetric Evo-Line System Kit

---

## Save up to 47% on time in the posterior region

---

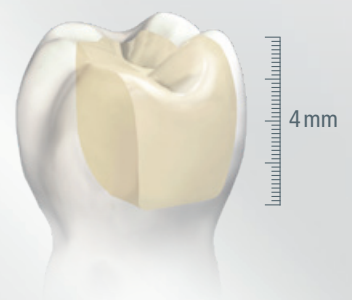
Bulk-filling technology<sup>1</sup> provides a more efficient treatment workflow. This means: Materials and instruments need to be changed less frequently and fewer curing cycles need to be performed due to the reduced number of increments. At the same time, equally good or even better treatment results are attainable compared with the conventional layering technique.



Fewer treatment steps thanks to the bulk-filling technique:



<sup>1</sup> Compared to Tetric® EvoFlow and Tetric® EvoCeram; data available on request.



# Efficient esthetics – even better together

The efficiency of the treatment procedure can be enhanced even further by combining the Tetric Evo-Line with other state-of-the-art products from Ivoclar Vivadent.

“ I have analyzed the restorations placed in more than 100 patients based on before and after digital images with the date and time stamps. While I had to schedule 45 minutes for an MOD filling in the past, I only need 30 minutes today for this type of restoration in the same high quality and esthetics – thanks to Tetric EvoCeram® Bulk Fill, Adhese® Universal and the short polymerization times provided by Bluephase® Style. ”

**Dr Petr Hajný**  
Prague, Czech Republic

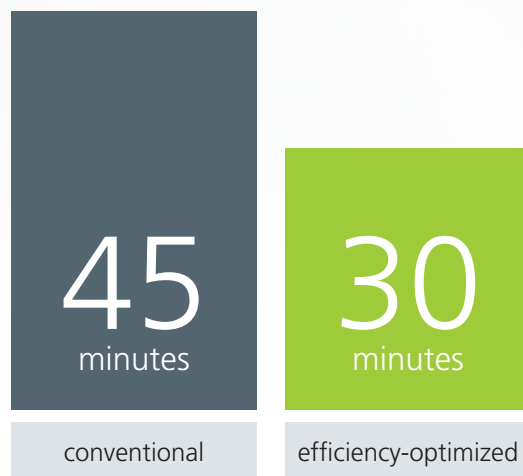


# 3 instead of 2 patients

treated in the same amount of time without compromises in quality

**Save valuable time during appointments.**

The diagram compares the time scheduled for conventional and efficiency-optimized treatment protocols to place Class II MOD restorations.



Source: Special Feature "A fast and comfortable way of restoring teeth, Tetric EvoFlow® Bulk Fill / Tetric EvoCeram® Bulk Fill", Ivoclar Vivadent, January 2016



**More information:**  
[www.ivoclarvivadent.com/hajny-en](http://www.ivoclarvivadent.com/hajny-en)



## Efficient Esthetics

Products that are optimally coordinated for direct restorative procedures enhance the efficiency with which high-quality esthetic restorations can be achieved.



### 1 Isolate

Effective isolation with **OptraGate®**, cotton rolls and saliva ejector



### 2 Bond

Direct intraoral application of **Adhese® Universal** with the efficient VivaPen®



### Restore

**Tetric Evo-Line** – One solution for all cavity classes

# 3



### 4 Contour

Time-saving contouring with **OptraSculpt®** due to its anti-stick effect



### 5 Cure

Reliable and fast curing with the **Bluephase®** curing units



### 6 Polish

High-gloss polishing in only one step **OptraPol®**

# Tetric<sup>®</sup> CAD – the esthetic composite block

---

Tetric CAD is an esthetic composite block for the efficient fabrication of indirect single-tooth restorations by means of the CAD/CAM technique. Due to the material's excellent chameleon effect, Tetric CAD restorations blend seamlessly with the remaining natural tooth structure.

Tetric CAD ideally complements the Tetric Evo-Line range of conventionally layered composite resins for inlays, onlays, veneers and crowns. Immediately after grinding, the restorations are polished and then seated using an adhesive cementation protocol. This processing technique is very efficient and allows esthetic results to be achieved quickly and easily.

The blocks are available in two translucency levels: MT (Medium Translucency, recommended for laminate veneers and crowns), which is available in five shades, and HT (High Translucency, recommended for inlays and onlays), which is available in 4 shades. While the small size I12 block is suitable for inlays, the large block C14 provides sufficient material for a crown.

// Tetric CAD is fast and easy to process. After the restoration has been ground, it can be polished to a high gloss in no time. //

**Dr Lukas Enggist**  
Ivoclar Vivadent, Schaan, Liechtenstein



Starting situation



Final situation

Source: Dr Lukas Enggist, Ivoclar Vivadent, Schaan, Liechtenstein





**Indications:**

<b>Tetric Evo-Line</b>	<b>Tetric CAD</b>
<b>Direct restorations</b>	<b>Indirect restorations</b>
Class I – V	Inlays, onlays, veneers, crowns

# Delivery forms

## Tetric Evo-Line

Tetric EvoCeram® – The universal composite		
<b>Assortments</b>	<b>Assortment 8 x 3-g syringes</b> 1 x A1, A2, A3, A3.5, A4, B3, C3, D3 1 x Tetric EvoCeram shade guide	<b>Assortment 40 x 0.2-g Cavifils</b> 5x A1, A2, A3, A3.5, A4, B3, C3, D3 1 x Tetric EvoCeram shade guide
<b>Shade guide</b>	Tetric EvoCeram shade guide	
<b>Refills</b>	available as 1 x 3-g syringes, 3 x 3-g syringes and 20 x 0.2-g Cavifils in the following shades: <b>Enamel shades (12% <sup>1</sup>):</b> A1, A2, A3, A3.5, A4, B1, B2, B3, C1, C2, C3, D2, D3 <b>Dentin shades (7% <sup>1</sup>):</b> A2 Dentin, A3.5 Dentin, A4 Dentin, B2 Dentin <b>Highly translucent enamel shade (15% <sup>1</sup>):</b> T <b>Bleach shades:</b> Bleach XL, Bleach L, Bleach I, Bleach M	

Tetric EvoFlow® – The universal flowable composite		
<b>Assortments</b>	<b>Assortment 8 x 2-g syringes</b> 1 x A1, A2, A3, A3.5, A4, B3, A3.5 Dentin, T 1 x Tetric EvoFlow shade guide 40 x 0.9-mm tips	<b>Assortment 40 x 0.2-g Cavifils</b> 5x A1, A2, A3, A3.5, A4, B3, A3.5 Dentin, T 1 x Tetric EvoFlow shade guide
<b>Shade guide</b>	Tetric EvoFlow shade guide	
<b>Refills</b>	available as 1 x 2-g syringe and 20 x 0.2-g Cavifils in the following shades: <b>Enamel shades (12% <sup>1</sup>):</b> A1, A2, A3, A3.5, A4, B1, B3 <b>Dentin shades (7% <sup>1</sup>):</b> A2 Dentin, A3.5 Dentin, B2 Dentin <b>Highly translucent enamel shade (23% <sup>1</sup>):</b> T <b>Bleach shades:</b> Bleach XL, Bleach L, Bleach M	

Tetric EvoCeram® Bulk Fill – The sculptable bulk-fill composite		
<b>Shade guide</b>	Bulk-fill shade guide (Tetric EvoCeram Bulk Fill / Tetric EvoFlow Bulk Fill)	
<b>Refills</b>	available as 1 x 3-g syringe, 3 x 3-g syringes and 20 x 0.2-g Cavifils in the following shades: <b>Universal shades (15% <sup>1</sup>):</b> IV <sub>A</sub> , IV <sub>B</sub> <b>Bleach shade:</b> IV <sub>W</sub>	

Tetric EvoFlow® Bulk Fill – The flowable bulk-fill composite		
<b>Shade guide</b>	Bulk-fill shade guide (Tetric EvoCeram Bulk Fill / Tetric EvoFlow Bulk Fill)	
<b>Refills</b>	available as 1 x 2-g syringe and 20 x 0.2-g Cavifils in the following shades: <b>Dentin shades (&lt; 10% <sup>1</sup>):</b> IV <sub>A</sub> , IV <sub>B</sub> <b>Bleach shade:</b> IV <sub>W</sub>	

### Accessories

**20 x 1.2-mm tips black**  
Tetric EvoFlow Bulk Fill



**20 x 0.9-mm tips black**  
Tetric EvoFlow and  
IPS Empress Direct Opaque



<sup>1</sup> Translucency (sample values), Technical Data Sheet Ivoclar Vivadent

## Tetric CAD

### Tetric® CAD – The esthetic composite block

Refills	<b>Tetric CAD for PrograMill</b>	
	MT (Medium Translucency)	
	<b>Block size C14:</b>	5x A1, A2, A3, A3.5, BL each
	<b>Block size I12:</b>	5x A1, A2, A3, A3.5, BL each
	HT (High Translucency)	
	<b>Block size C14:</b>	5x A1, A2, A3, A3.5 each
	<b>Block size I12:</b>	5x A1, A2, A3, A3.5 each
	<b>Tetric CAD for CEREC/inLab</b>	
	MT (Medium Translucency)	
	<b>Block size C14:</b>	5x A1, A2, A3, A3.5, BL each
	<b>Block size I12:</b>	5x A1, A2, A3, A3.5, BL each
	HT (High Translucency)	
<b>Block size C14:</b>	5x A1, A2, A3, A3.5 each	
<b>Block size I12:</b>	5x A1, A2, A3, A3.5 each	
<b>Tetric CAD for PlanMill<sup>1</sup></b>		
MT (Medium Translucency)		
<b>Block size C14:</b>	5x A1, A2, A3, A3.5, BL each	
<b>Block size I12:</b>	5x A1, A2, A3, A3.5, BL each	
HT (High Translucency)		
<b>Block size C14:</b>	5x A1, A2, A3, A3.5 each	
<b>Block size I12:</b>	5x A1, A2, A3, A3.5 each	

<sup>1</sup> Available from October 2018

## Tetric Evo-Line System Kits

### Tetric Evo-Line System Kit Cavifil 55x 0.2-g Cavifils

10x Tetric EvoCeram Bulk Fill <sup>®</sup>A, 10x Tetric EvoFlow Bulk Fill <sup>®</sup>A,  
10x Tetric EvoCeram A2, 10x Tetric EvoCeram A3,  
5x Tetric EvoCeram A2 Dentin, 10x Tetric EvoFlow A3



### Tetric Evo-Line System Kit Syringe 4x 3-g syringes and 2x 2-g Luerlock syringes

1x Tetric EvoCeram Bulk Fill <sup>®</sup>A, 1x Tetric EvoFlow Bulk Fill <sup>®</sup>A,  
1x Tetric EvoCeram A2, 1x Tetric EvoCeram A3,  
1x Tetric EvoCeram A2 Dentin, 1x Tetric EvoFlow A3



